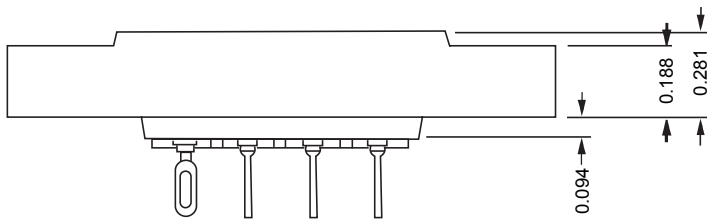
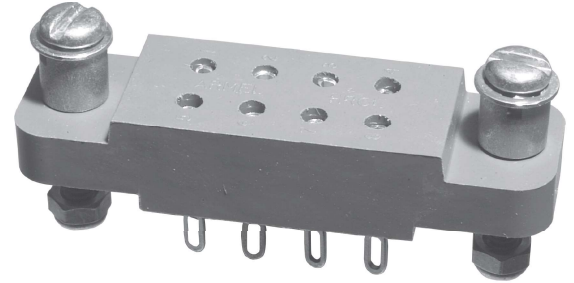
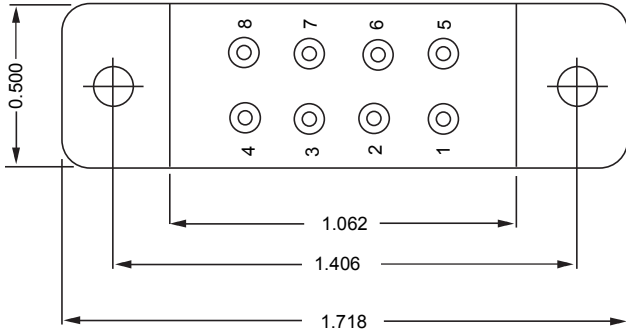
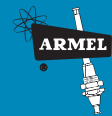


HRCL SERIES



ELECTRICAL

Wire Size:

- Solder Cup Type One #20 AWG
- Eyelet Type. Two #20 AWG or
Three #22 AWG

Current Rating. 10 Amperes

Withstanding Voltage:

- Contact to Contact Sea Level 2700 VRMS Minimum
- Contact to Ground Sea Level 5400 VRMS Minimum
- Contact to Contact 70,000 Ft. 560 VRMS Minimum
- Contact to Ground 70,000 Ft. 975 VRMS Minimum

MECHANICAL

- Creepage Between Contacts 0.16 Minimum
- Air Space Between Contacts. 0.11 Minimum
- Contacts to Accept 0.050 ± 0.001 DIA. Pins

Contacts:

- Spring Temper Grade "A" Phosphor Bronze, or
- Heat Treated Beryllium Copper
- Gold Plated over Copper or Nickel Plate

Mounting Hardware:

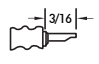
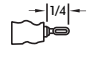
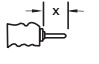
- Special Studs, Screws, Lockwashers, and Nuts

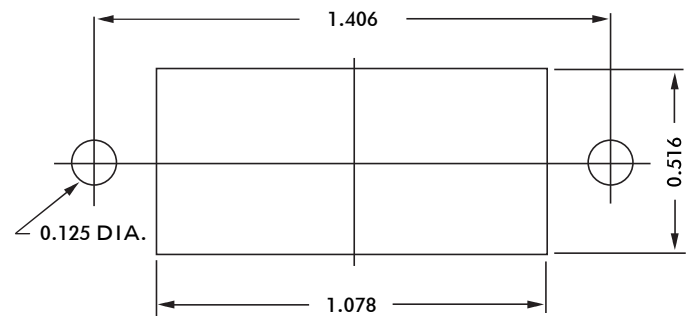
Insulation Material:

- Choice of **MIL Approved** Thermosetting
- Insulations (See Page 45)

Temperature Ratings: -65°C to +125°C

Weight of Socket with Mountings: 0.39 oz.

CONTACT DATA	CHASSIS MOUNTING DATA			
	CHASSIS THICKNESS	X-DIMENSION	X	
			BELOW CHASSIS	BELOW CHASSIS
	1/16	.20		HRCL-1
	3/32	.17		
	1/8	.14		HRCL-41
	1/16	.20		HRCL-5
	3/32	.17		HRCL-35
	1/8	.14		HRCL-45
	1/16	.12		HRCL-44
	3/32	.19		HRCL-64
	1/8			



RECOMMENDED CHASSIS CUT-OUT