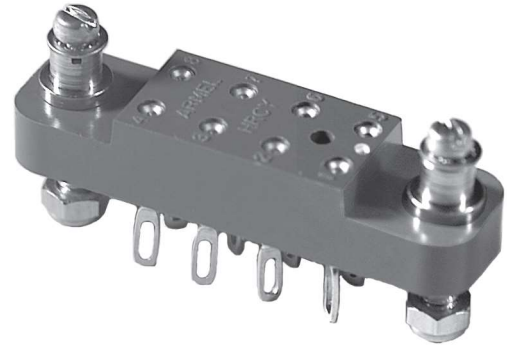
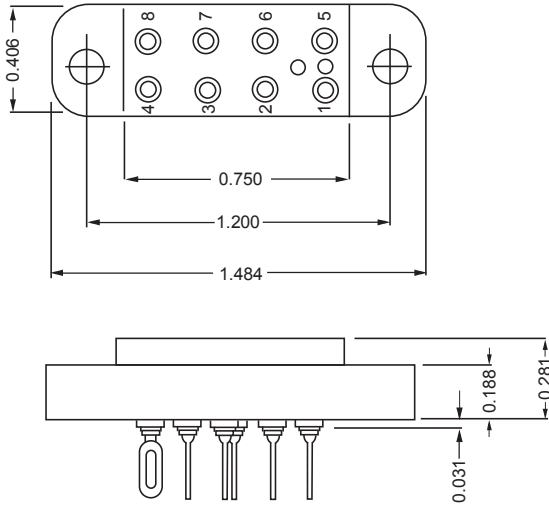




HRCY SERIES



ELECTRICAL

Wire Size:

- Solder Cup Type. One #20 AWG
- Eyelet Type. Two #20 AWG or
Three #22 AWG

Current Rating. 3 Amperes

Withstanding Voltage:

- Contact to Contact Sea Level. 2700 VRMS Minimum
- Contact to Ground Sea Level. 3300 VRMS Minimum
- Contact to Contact 70,000 Ft. 560 VRMS Minimum
- Contact to Ground 70,000 Ft. 675 VRMS Minimum

MECHANICAL

- Creepage Between Contacts. 0.17 Minimum
- Air Space Between Contacts. 0.11 Minimum
- Contacts to Accept 0.030 ± 0.001 DIA. Pins

Contacts:

- Spring Temper Grade "A" Phosphor Bronze or
Heat Treated Beryllium Copper
- Gold Plated over Copper or Nickel Plate

Mounting Hardware:

- Special Studs, Screws, Lockwashers, and Nuts

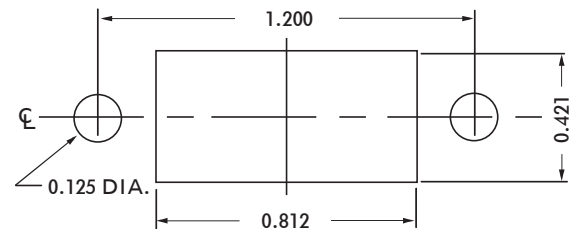
Insulation Material:

- Choice of **MIL Approved** Thermosetting
Insulations (See Page 45)

Temperature Ratings: -65°C to +125°C

Weight of Socket with Mountings: 0.25 oz.

CONTACT DATA		CHASSIS MOUNTING DATA				
		CHASSIS THICKNESS	X-DIMENSION	MOUNTING STYLE		
				BELOW CHASSIS	BELOW CHASSIS	ABOVE CHASSIS
OPEN ENTRY	SOLDER CUP	1/16	.17	HRCY - 1		HRCY - 2
		3/32	.14		HRCY - 31	HRCY - 32
		1/8	.12		HRCY - 41	HRCY - 42
	EYELET	1/16	.17	HRCY - 5		HRCY - 6
		3/32	.14		HRCY - 35	HRCY - 36
		1/8	.12		HRCY - 45	HRCY - 46
STRAIGHT	1/16				HRCY - 4	
	3/32					
	1/8					
CLOSED ENTRY	SOLDER CUP	1/16	.17	HRCY - 1K		HRCY - 2K
		3/32	.14		HRCY - 31K	HRCY - 32K
		1/8	.12		HRCY - 41K	HRCY - 42K
	EYELET	1/16	.17	HRCY - 5K		HRCY - 6K
		3/32	.14		HRCY - 35K	HRCY - 36K
		1/8	.12		HRCY - 45K	HRCY - 46K
STRAIGHT	1/16				HRCY - 4K	
	3/32					
	1/8					



RECOMMENDED CHASSIS CUT-OUT