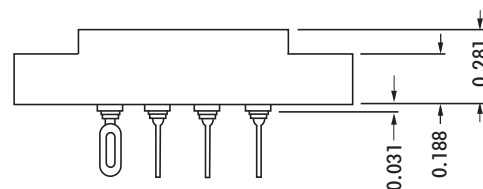
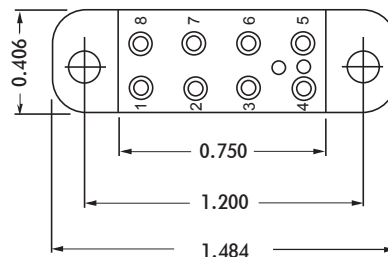


HRCZ SERIES



CONTACT DATA		CHASSIS MOUNTING DATA				
		CHASSIS THICKNESS	X-DIMENSION	BELOW CHASSIS	BELOW CHASSIS	ABOVE CHASSIS
OPEN ENTRY	SOLDER CUP 	1/16	.17	HRCZ - 1		HRCZ - 2
		3/32	.14		HRCZ - 31	HRCZ - 32
		1/8	.12		HRCZ - 41	HRCZ - 42
	EYELET 	1/16	.17	HRCZ - 5		HRCZ - 6
		3/32	.14		HRCZ - 35	HRCZ - 36
		1/8	.12		HRCZ - 45	HRCZ - 46
STRAIGHT 	1/16				HRCZ - 4	
	3/32				HRCZ - 34	
	1/8					
CLOSE ENTRY	SOLDER CUP 	1/16	.17	HRCZ - 1K		HRCZ - 2K
		3/32	.14		HRCZ - 31K	HRCZ - 32K
		1/8	.12		HRCZ - 41K	HRCZ - 42K
	EYELET 	1/16	.17	HRCZ - 5K		HRCZ - 6K
		3/32	.14		HRCZ - 35K	HRCZ - 36K
		1/8	.12		HRCZ - 45K	HRCZ - 46K
	STRAIGHT 	1/16				HRCZ - 4K
		3/32				
		1/8				

ELECTRICAL

Wire Size:

Solder Cup Type. One #20 AWG
 Eyelet Type. Two #20 AWG or
 Three #22 AWG

Current Rating. 3 Amperes

Withstanding Voltage:

Contact to Contact Sea Level. 2700 VRMS Minimum
 Contact to Ground Sea Level. 3300 VRMS Minimum
 Contact to Contact 70,000 Ft. 560 VRMS Minimum
 Contact to Ground 70,000 Ft. 675 VRMS Minimum

MECHANICAL

Creepage Between Contacts. 0.17 Minimum
 Air Space Between Contacts. 0.11 Minimum
 Contacts to Accept 0.030 ± 0.001 DIA. Pins

Contacts:

Spring Temper Grade "A" Phosphor Bronze, or
 Heat Treated Beryllium Copper
 Gold Plated over Copper or Nickel Plate

Mounting Hardware:

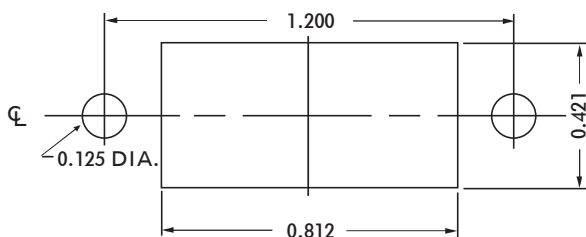
Special Studs, Screws, Lockwashers, and Nuts

Insulation Material:

Choice of **MIL Approved** Thermosetting
 Insulations (See Page 45)

Temperature Ratings: -65°C to +125°C

Weight of Socket with Mountings: 0.23 oz.



RECOMMENDED CHASSIS CUT-OUT