

ELECTRICAL

Wire Size:

- Solder Cup Type. One #20 AWG
- Eyelet Type. Two #20 AWG or
Three #22 AWG

Current Rating. 3 Amperes

Withstanding Voltage:

- Contact to Contact Sea Level. . . 2700 VRMS Minimum
- Contact to Ground Sea Level. . . 2700 VRMS Minimum
- Contact to Contact 70,000 Ft. . . .560 VRMS Minimum
- Contact to Ground 70,000 Ft. . . .560 VRMS Minimum

MECHANICAL

- Creepage Between Contacts. 0.16 Minimum
- Air Space Between Contacts. 0.11 Minimum
- Contacts to Accept 0.030 ± 0.001 DIA. Pins

Contacts:

- Spring Temper Grade "A" Phosphor Bronze, or
Heat Treated Beryllium Copper
- Gold Plated over Copper or Nickel Plate

Mounting Hardware:

- Special Stud, Screws, Lockwashers, and Nuts

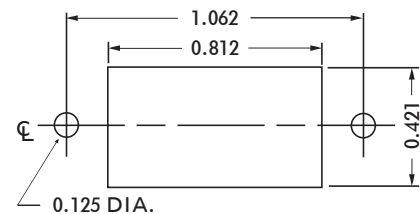
Insulation Material:

- Choice of **MIL Approved** Thermosetting
Insulations (See Page 45)

Temperature Ratings: -65°C to +125°C

Weight of Socket with Mountings: 0.26 oz.

		CHASSIS MOUNTING DATA		
		CONTACT DATA	CHASSIS THICKNESS	
OPEN EN TRY	 SOLDER CUP	 STUD 0.28	 RIVET 0.11	
		1/16 - 1/8	HRCD-2	
		1/16		HRCD-22
	 EYELET	1/16 - 1/8	HRCD-6	
		1/16		HRCD-26
	 STRAIGHT	1/16 - 1/8	HRCD-24	
1/16			HRCD-4	
CLOSE EN TRY	 SOLDER CUP	1/16 - 1/8	HRCD-2K	
		1/16		HRCD-22K
	 EYELET	1/16 - 1/8	HRCD-6K	
		1/16		HRCD-26K
 STRAIGHT	1/8	HRCD-24K	HRCD-4K	
	1/16			



RECOMMENDED CHASSIS CUT-OUT